



STYLE
2701 / 2703 / 2705 / 2710

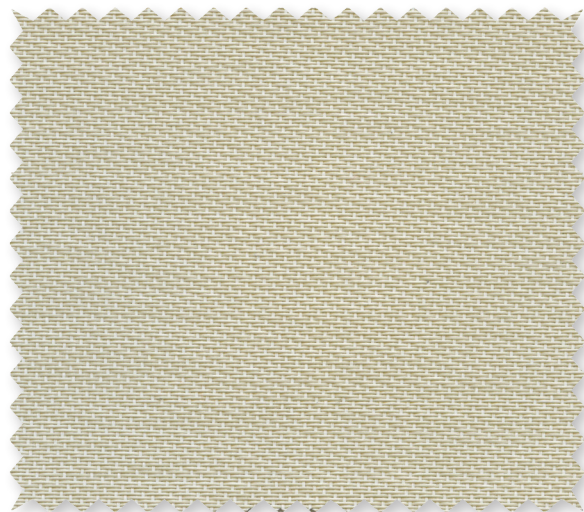
WEAVING
EXCELLENCE
WITH
INNOVATION



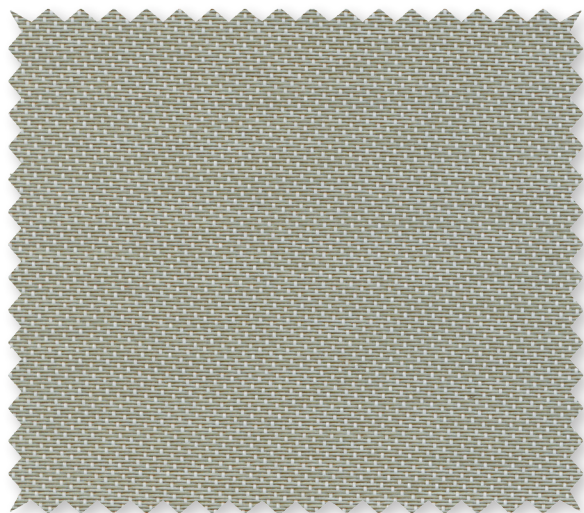
P12 **Oyster**



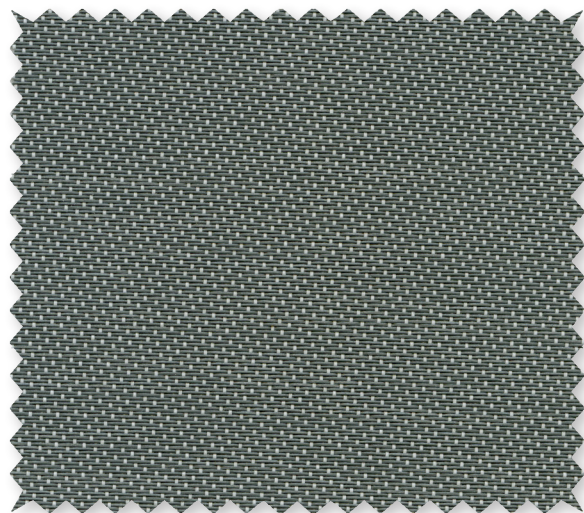
P13 **Oyster/Beige**



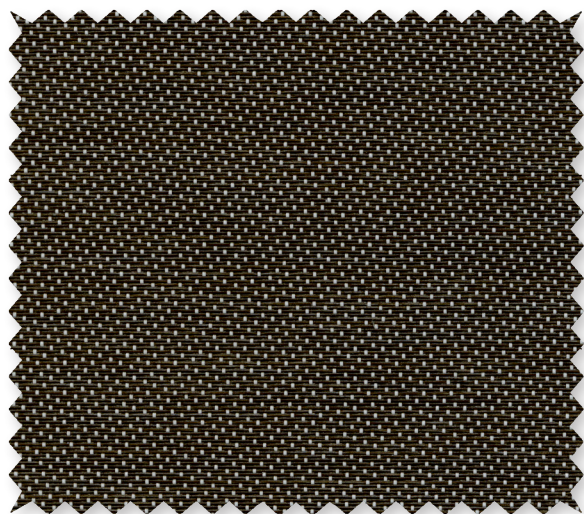
P14 **Oyster/Pearl Gray**
(currently available in 2701, 2703 and 2705)



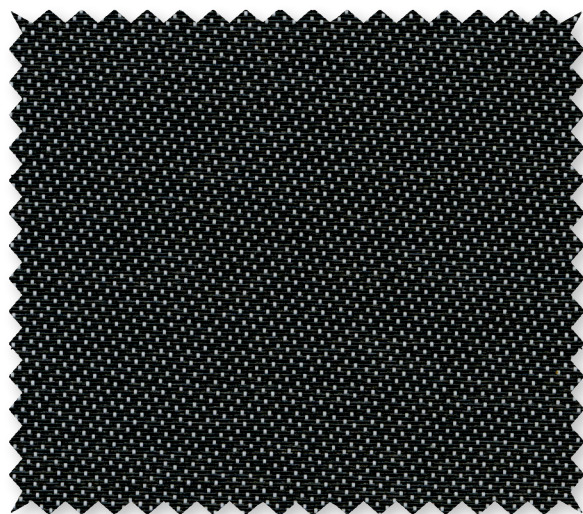
P91 **Oyster/Pewter**



P92 **Oyster/Chestnut**



P28 **Oyster/Charcoal**



*Colors may vary based on individual computer settings and should only be used for general reference.

| | | SOLAR OPTICAL PROPERTIES | | | | SHGC/G VALUE g-tot (glass & blind) | |
|------------------|-------------------|--------------------------|----|----|----|---------------------------------------|--------------------|
| Code | Color | TS | RS | AS | TV | SINGLE 1/4 CL | INSULATING 1 HA |
| STYLE 2701 - 1% | | | | | | | |
| P12 | Oyster | 21 | 64 | 15 | 17 | 0.31 | 0.23 |
| P13 | Oyster/Beige | 15 | 57 | 28 | 12 | 0.33 | 0.23 |
| P14 | Oyster/Pearl Gray | 8 | 54 | 38 | 4 | 0.34 | 0.24 |
| P28 | Oyster/Charcoal | 5 | 39 | 56 | 6 | 0.41 | 0.28 |
| P91 | Oyster/Pewter | 6 | 43 | 51 | 6 | 0.39 | 0.26 |
| P92 | Oyster/Chestnut | 6 | 41 | 53 | 6 | 0.40 | 0.28 |
| | | | | | | | |
| STYLE 2703 - 3% | | | | | | | |
| P12 | Oyster | 22 | 62 | 16 | 19 | 0.32 | 0.23 |
| P13 | Oyster/Beige | 15 | 58 | 27 | 13 | 0.33 | 0.24 |
| P14 | Oyster/Pearl Gray | 9 | 53 | 38 | 9 | 0.35 | 0.25 |
| P28 | Oyster/Charcoal | 7 | 40 | 53 | 8 | 0.42 | 0.28 |
| P91 | Oyster/Pewter | 8 | 44 | 48 | 9 | 0.40 | 0.27 |
| P92 | Oyster/Chestnut | 7 | 42 | 51 | 8 | 0.41 | 0.28 |
| | | | | | | | |
| STYLE 2705 - 5% | | | | | | | |
| P12 | Oyster | 22 | 62 | 16 | 20 | 0.32 | 0.23 |
| P13 | Oyster/Beige | 23 | 54 | 23 | 21 | 0.37 | 0.26 |
| P14 | Oyster/Pearl Gray | 19 | 51 | 30 | 21 | 0.38 | 0.26 |
| P28 | Oyster/Charcoal | 12 | 40 | 48 | 14 | 0.43 | 0.29 |
| P91 | Oyster/Pewter | 11 | 46 | 43 | 12 | 0.39 | 0.27 |
| P92 | Oyster/Chestnut | 12 | 43 | 45 | 13 | 0.41 | 0.28 |
| | | | | | | | |
| STYLE 2710 - 10% | | | | | | | |
| P12 | Oyster | 34 | 54 | 12 | 32 | 0.39 | 0.27 |
| P13 | Oyster/Beige | 29 | 51 | 20 | 28 | 0.40 | 0.27 |
| P28 | Oyster/Charcoal | 21 | 37 | 42 | 24 | 0.46 | 0.30 |
| P91 | Oyster/Pewter | 24 | 43 | 33 | 25 | 0.44 | 0.29 |
| P92 | Oyster/Chestnut | 25 | 41 | 34 | 26 | 0.45 | 0.30 |



Microban® antimicrobial protection inhibits the growth of stain-causing bacteria, mold and mildew on the shade.



PRODUCT CERTIFIED FOR
LOW CHEMICAL EMISSIONS
UL.COM/GG
UL 2818



MIF Seal of Approval



TS = Solar Transmittance
RS = Solar Reflectance
AS = Solar Absorption
TV = Visual Transmittance

SHGC = Solar Heat Gain Coefficient

1/4 CL = 1/4" Clear Glass
1 HA = 1" Heat Absorbing Glass

Fabrics Installed Internally
Zero-Degree Profile Angle

For additional performance values, test
references and technical definitions visit us at
www.phifer.com.

STYLE 2701 / 2703 / 2705 / 2710 SPECIFICATIONS

Styles 2701, 2703, 2705 and 2710 are woven from a unique twill pattern that displaces the individual yarns to create a two-sided fabric for maximum performance in heat reduction, glare reduction and improved visibility. Style 2701/2703/2705/2710 can also be used in exterior roller shades.

| | | |
|---------------------------------------|---|--|
| FIRE CLASSIFICATION | California U.S. Title 19 (small scale) NFPA 101 (Class A Rating) BS 5867 2008 Part 2 Type B Performance CAN/ULC-S 109-03 (large and small scale) CAN/CGSB2-4.162-M80 | NFPA 701-2004 TM#1 (small scale) IBC Section 903.1 (Class A Rating) NFPA 701 TM#2 (large scale) ASTM E 84 (Class 1) |
| BACTERIA AND FUNGAL RESISTANCE | ASTM E 2180 GREENGUARD Mold and Bacteria Standard ASTM 6329 includes Microban antimicrobial additives | ASTM G21 AATCC30 Part 3 ASTM D 3273 |
| ENVIRONMENTAL CERTIFICATION | GREENGUARD Certified to these standards for low chemical emissions into indoor air during product usage | GREENGUARD Gold |
| LEAD FREE | RoHS/Directive 2002/95/EC ANSI/WCMA A 100.1-2007 for lead content US Consumer Product Safety Commission Section 101 | REACH (EC 1907/2006) compliant |
| WARRANTY | 10-year interior 5-year exterior | |
| ACOUSTICAL PERFORMANCE | NRC (Noise Reduction Coefficient) and SAA (Sound Absorption Average) tested in accordance with ASTM C423-09a | |
| UV PROTECTION | Seal of Approval by the Melanoma International Foundation (MIF) for effectiveness in preventing sun damage to the skin or eyes | |
| TRACKLESS | TrackLess Technology minimizes the fiberglass yarns' inherent tendencies to track when being rolled up in a shade. With TrackLess Technology these same fabrics now track less, roll up straighter and reduce shade fabrication time. | |

| STYLE | 2701 | 2703 | 2705 | 2710 |
|-------------------------|--|--|--|---|
| WIDTHS | 63", 98" and 126" 160.0 cm, 248.9 cm and 320 cm | 63", 98" and 126" 160.0 cm, 248.9 cm and 320 cm | 63", 98" and 126" 160.0 cm, 248.9 cm and 320 cm | 63" and 98" 160.0 cm and 248.9 cm |
| ROLL LENGTH | 30 Linear Yards 27.4 m | 30 Linear Yards 27.4 m | 30 Linear Yards 27.4 m | 30 Linear Yards 27.4 m |
| COMPOSITION | 36% Fiberglass 64% Vinyl on Fiberglass | 36% Fiberglass 64% Vinyl on Fiberglass | 34% Fiberglass 66% Vinyl on Fiberglass | 34% Fiberglass 66% Vinyl on Fiberglass |
| MESH WEIGHT | 14.6 oz/yd ² 495 g/m ² | 14.0 oz/yd ² 475 g/m ² | 11.8 oz/yd ² 379 g/m ² | 10.4 oz/yd ² 353 g/m ² |
| FABRIC THICKNESS | 0.027 in 0.66 mm | 0.028 in 0.71 mm | 0.025 in 0.64 mm | 0.025 in 0.64 mm |
| OPENNESS FACTOR | Approximately 1% | Approximately 3% | Approximately 5% | Approximately 10% |
| UV BLOCKAGE | Approximately 99% | Approximately 97% | Approximately 95% | Approximately 90% |
| ACOUSTICAL VALUE | NRC .15 / SAA .15 | NRC .10 / SAA .09 | NRC .05 / SAA .06 | |

PHIFER
INCORPORATED

P. O. Box 1700 • Tuscaloosa, Alabama 35403-1700 USA
Phone: 205.345.2120 • FAX: 205.391.0799
Toll Free USA/Canada: 1.800.221.5497
www.phifer.com • ISO Registered



® SheerWeave is a registered trademark of PHIFER INCORPORATED.
© MICROBAN is a registered trademark of Microban Products Company.
™ UL, the UL logos and the UL mark are trademarks of UL LLC.
Photo courtesy of DRAPER INC., Spiceland, Indiana, USA.
© PHIFER INCORPORATED V15B 3033833