



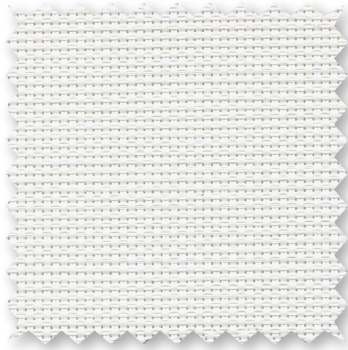
STYLE  
4600 / 4500

---

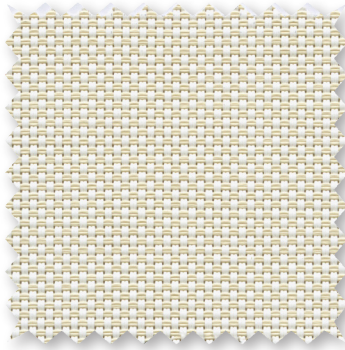
WEAVING  
EXCELLENCE  
WITH  
INNOVATION



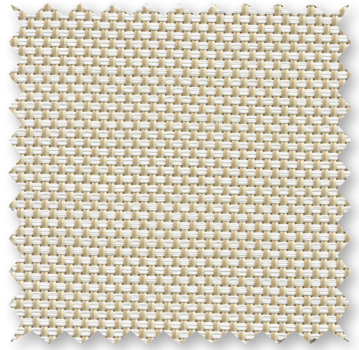
P06 **Chalk**



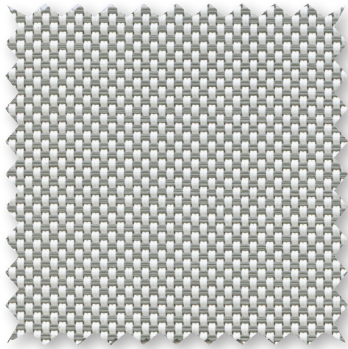
U32 **Linen**



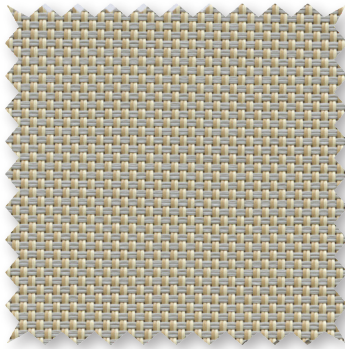
Q59 **Ecru**



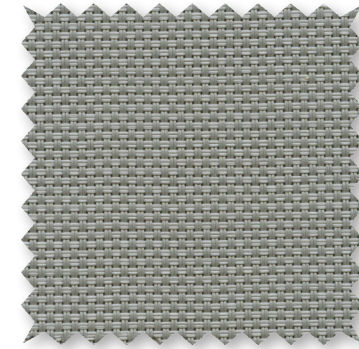
P10 **Granite**



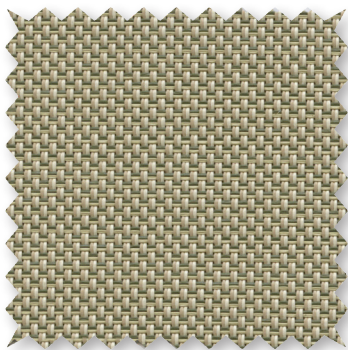
V44 **Sandstone**



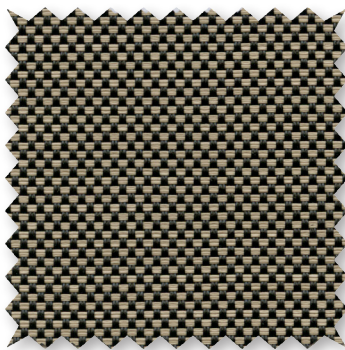
V07 **Pewter**



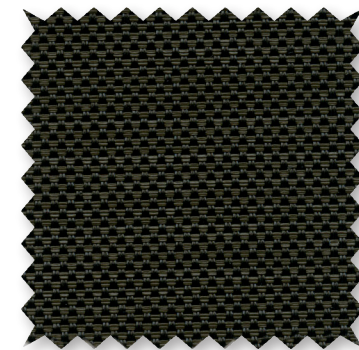
Q60 **Golden Sand**



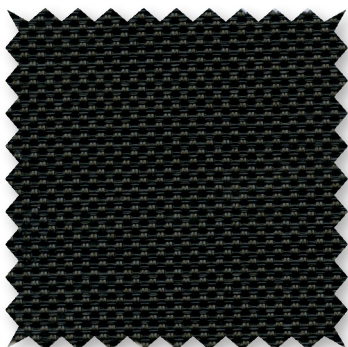
V95 **Cappuccino**



V96 **Dark Bronze**



V10 **Ebony**



\*Colors may vary based on individual computer settings and should only be used for general reference.



		SOLAR OPTICAL PROPERTIES				SHGC/G VALUE g-tot (glass & blind)	
Code	Color	TS	RS	AS	TV	SINGLE 1/4 CL	INSULATING 1 HA
STYLE 4600 - 3%							
P06	Chalk	10	74	16	9	0.23	0.19
P10	Granite	5	43	52	7	0.40	0.27
Q59	Ecru	7	58	35	8	0.32	0.23
Q60	Golden Sand	6	37	57	7	0.44	0.29
U32	Linen	8	64	28	8	0.29	0.22
V07	Pewter	5	31	64	7	0.46	0.30
V10	Ebony	3	3	94	5	0.61	0.37
V44	Sandstone	5	39	56	6	0.42	0.29
V95	Cappuccino	4	20	76	6	0.52	0.33
V96	Dark Bronze	4	5	91	7	0.60	0.37
STYLE 4500 - 5%							
P06	Chalk	12	74	14	11	0.23	0.19
P10	Granite	6	47	47	8	0.37	0.26
Q59	Ecru	9	56	35	9	0.33	0.24
Q60	Golden Sand	7	37	56	8	0.44	0.29
U32	Linen	11	63	26	12	0.30	0.23
V07	Pewter	6	30	64	9	0.47	0.30
V10	Ebony	5	3	92	7	0.61	0.37
V44	Sandstone	8	40	52	9	0.42	0.29
V95	Cappuccino	6	18	76	9	0.53	0.34
V96	Dark Bronze	7	5	88	10	0.61	0.37



Microban® antimicrobial protection inhibits the growth of stain-causing bacteria, mold and mildew on the shade.



PRODUCT CERTIFIED FOR  
LOW CHEMICAL EMISSIONS  
UL.COM/GG  
UL 2818



MIF Seal of Approval



TS = Solar Transmittance  
RS = Solar Reflectance  
AS = Solar Absorption  
TV = Visual Transmittance

SHGC = Solar Heat Gain Coefficient

1/4 CL = 1/4" Clear Glass  
1 HA = 1" Heat Absorbing Glass

Fabrics Installed Internally  
Zero-Degree Profile Angle

For additional performance values, test references and technical definitions visit us at [www.phifer.com](http://www.phifer.com).

# STYLE 4600 / 4500 SPECIFICATIONS

Using advances in polyester yarn development, Styles 4600 and 4500 are thinner, lighter weight vinyl coated polyester fabrics offered in 10 decorator colors. Woven in a 2x2 basketweave, these fabrics are ideal for applications where a more opaque and non-directional fabric is needed. Style 4600/4500 can also be used in exterior shading systems.

<b>FIRE CLASSIFICATION</b>	California U.S. Title 19 (small scale) NFPA 101 (Class A Rating) BS 5867 2008 Part 2 Type B Performance CAN/ULC-S 109-03 (large and small scale)	NFPA 701-2004 TM#1 (small scale) IBC Section 903.1 (Class A Rating) NFPA 701 TM#2 (large scale) ASTM E 84 (Class 1)
<b>BACTERIA AND FUNGAL RESISTANCE</b>	ASTM E 2180 ASTM G21 GREENGUARD Mold and Bacteria Standard ASTM 6329 includes Microban antimicrobial additives	AATCC30 Part 3 ASTM D 3273
<b>ENVIRONMENTAL CERTIFICATION</b>	GREENGUARD Certified to these standards for low chemical emissions into indoor air during product usage	GREENGUARD Gold
<b>LEAD FREE</b>	RoHS/Directive 2002/95/EC ANSI/WCMA A 100.1-2007 for lead content US Consumer Product Safety Commission Section 101	REACH (EC 1907/2006) compliant
<b>WARRANTY</b>	10-year interior 5-year exterior	
<b>ACOUSTICAL PERFORMANCE</b>	NRC (Noise Reduction Coefficient) and SAA (Sound Absorption Average) tested in accordance with ASTM C423-09a	
<b>UV PROTECTION</b>	Seal of Approval by the Melanoma International Foundation (MIF) for effectiveness in preventing sun damage to the skin or eyes	

STYLE	4600	4500
<b>WIDTHS</b>	63" and 98" 160.0 cm and 248.9 cm	63" and 98" 160.0 cm and 248.9 cm
<b>ROLL LENGTH</b>	30 Linear Yards 27.4 m	30 Linear Yards 27.4 m
<b>COMPOSITION</b>	22% Polyester 78% Vinyl on Polyester	17% Polyester 83% Vinyl on Polyester
<b>MESH WEIGHT</b>	17.4 oz/yd <sup>2</sup> 589.97 g/m <sup>2</sup>	14.4 oz/yd <sup>2</sup> 488.25 g/m <sup>2</sup>
<b>FABRIC THICKNESS</b>	0.030 in 0.76 mm	0.024 in 0.61 mm
<b>OPENNESS FACTOR</b>	Approximately 3%	Approximately 5%
<b>UV BLOCKAGE</b>	Approximately 97%	Approximately 95%
<b>ACOUSTICAL VALUE</b>	NRC .20 / SAA .23	NRC .15 / SAA .17

**PHIFER**  
INCORPORATED

P. O. Box 1700 • Tuscaloosa, Alabama 35403-1700 USA  
Phone: 205.345.2120 • FAX: 205.391.0799  
Toll Free USA/Canada: 1.800.221.5497  
www.phifer.com • ISO Registered



® SheerWeave is a registered trademark of PHIFER INCORPORATED.  
© MICROBAN is a registered trademark of Microban Products Company.  
™ UL, the UL logos and the UL mark are trademarks of UL LLC.  
Photo courtesy of Rielamericano, Buenos Aires, Argentina.  
© PHIFER INCORPORATED V15 3033835