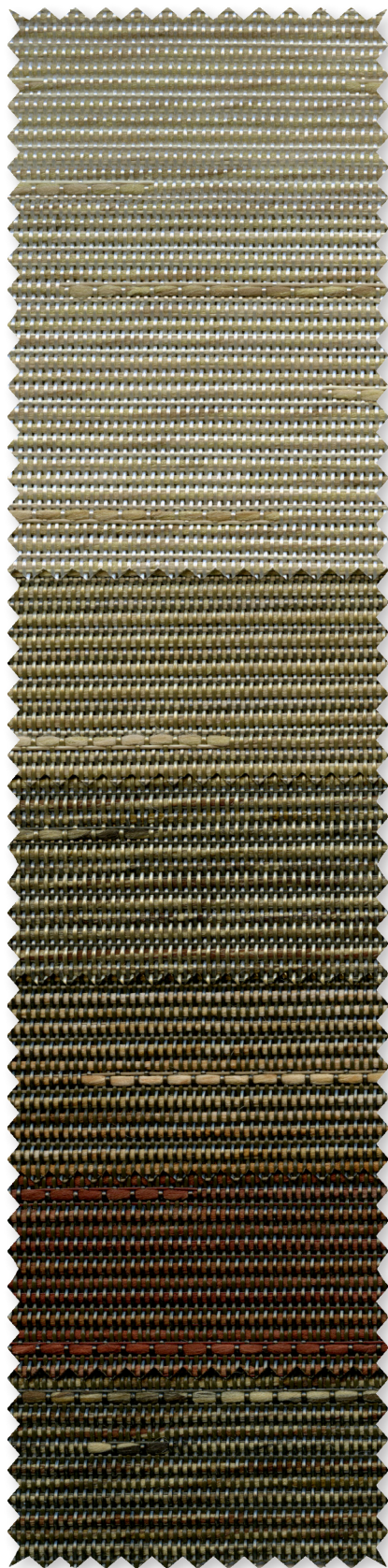




STYLE
5000

WEAVING
EXCELLENCE
WITH
INNOVATION





U12
Linen/
Cream

U11
Linen/
Burlap

U10
Linen/
Topaz

R12
Linen/
Cinnamon

R11
Linen/
Cranberry

V88
Linen/ Fig



R92
Chenille/
Driftwood

R89
Chenille/
Marshmallow

R90
Chenille/
Pearl

R91
Chenille/
Honey

R93
Wicker/ Straw

Q51
Wicker/
Mushroom

R94
Wicker/
Truffle

*Colors may vary based on individual computer settings and should only be used for general reference.



P60
Bamboo/
Birch

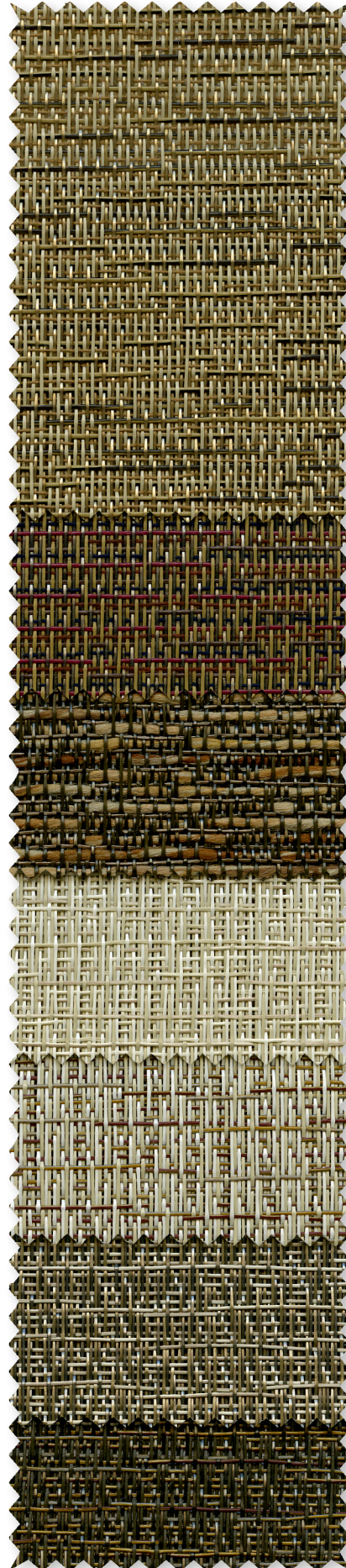
Q46
Bamboo/
Wheat

U29
Seaglass/
Crystal

U28
Seaglass/
Chardonnay

U25
Seaglass/
Copper

U24
Seaglass/
Silver



Q50
Bark/Tiger
Oak

Q48
Bark/Cedar

R95
Bark/Sienna

U16
Crepe/Toasted
Coconut

U15
Crepe/
Granola

U14
Crepe/Walnut

V90
Crepe/
Chestnut

*Colors may vary based on individual computer settings and should only be used for general reference.



Q95
Tweed /
Buckeye

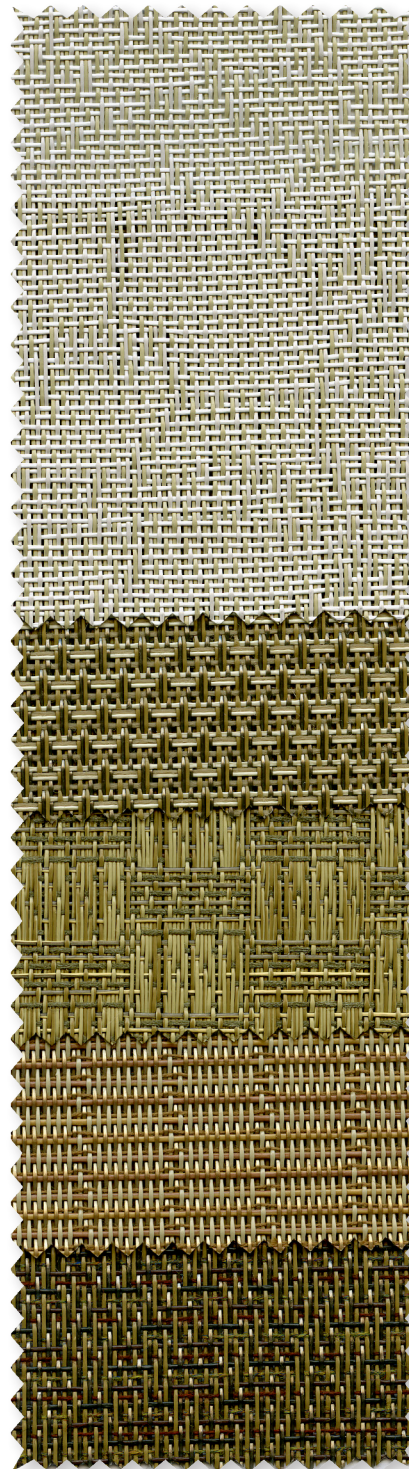
Q94
Tweed /
Oatmeal

R85
Jute /
Parchment

R86
Jute / Flax

R87
Jute / Latte

R88
Jute /
Coffee



Q43
Marble /
Sand

Q53
Honeycomb /
Brown Sugar

Q96
Thatch /
Wheatgrass

Q49
Rattan /
Umber

Q47
Moire /
Mocha

*Colors may vary based on individual computer settings and should only be used for general reference.



STYLE 5000

		SOLAR OPTICAL PROPERTIES				SHGC/G VALUE g-tot (glass & blind)	
Code	Color	TS	RS	AS	TV	SINGLE 1/4 CL	INSULATING 1 HA
STYLE 5000							
P60	Bamboo/Birch	21	59	20	18	0.34	0.24
Q43	Marble/Sand	9	48	43	9	0.37	0.26
Q46	Bamboo/Wheat	19	29	52	16	0.50	0.32
Q47	Moire/Mocha	17	23	60	15	0.53	0.33
Q48	Bark/Cedar	22	17	61	16	0.57	0.36
Q49	Rattan/Umber	18	27	55	12	0.51	0.32
Q50	Bark/Tiger Oak	17	24	59	16	0.52	0.33
Q51	Wicker/Mushroom	15	24	61	11	0.52	0.33
Q53	Honeycomb/ Brown Sugar	19	26	55	15	0.52	0.33
Q94	Tweed/Oatmeal	11	34	55	10	0.46	0.30
Q95	Tweed/Buckeye	9	28	63	9	0.49	0.31
Q96	Thatch/Wheatgrass	11	26	63	11	0.50	0.32
R11	Linen/Cranberry	7	17	76	8	0.54	0.34
R12	Linen/Cinnamon	6	20	74	8	0.52	0.33
R85	Jute/Parchment	13	70	17	10	0.26	0.21
R86	Jute/Flax	30	56	14	27	0.37	0.26
R87	Jute/Latte	24	50	26	21	0.40	0.27
R88	Jute/Coffee	5	15	80	5	0.55	0.35
R89	Chenille/Marshmallow	16	67	17	15	0.29	0.22
R90	Chenille/Pearl	32	53	15	29	0.40	0.27
R91	Chenille/Honey	26	47	27	24	0.42	0.28
R92	Chenille/Driftwood	12	26	62	14	0.50	0.32
R93	Wicker/Straw	14	48	38	13	0.39	0.27
R94	Wicker/Truffle	8	12	80	9	0.57	0.36
R95	Bark/Sienna	6	16	78	6	0.55	0.34
U10	Linen/Topaz	11	24	65	10	0.51	0.33
U11	Linen/Burlap	10	30	60	9	0.48	0.31
U12	Linen/Cream	22	46	31	21	0.42	0.28
U14	Crepe/Walnut	21	26	53	22	0.52	0.33
U15	Crepe/Granola	20	30	50	24	0.50	0.32
U16	Crepe/ Toasted Coconut	24	40	36	25	0.45	0.31
U24	Seaglass/Silver	33	27	40	37	0.54	0.34
U25	Seaglass/Copper	22	20	58	23	0.56	0.35
U28	Seaglass/Chardonnay	40	43	17	41	0.47	0.30
U29	Seaglass/Crystal	44	49	7	45	0.44	0.29
V88	Linen/Fig	6	15	79	8	0.55	0.35
V90	Crepe/Chestnut	15	9	76	19	0.60	0.37

Original artwork and original designs are protected under U.S. copyright laws. The samples attached to this notice fall under the federal statute and are therefore protected. Slight changes in the color combinations or weave pattern do not remove your legal obligation. If you would like further information regarding the copyright status of a pattern, please call the market manager representative at 1/800-221-5497 and refer to the style number.



Microban® antimicrobial protection inhibits the growth of stain-causing bacteria, mold and mildew on the shade.



PRODUCT CERTIFIED FOR
LOW CHEMICAL EMISSIONS
UL.COM/GG
UL 2818



MIF Seal of Approval



TS = Solar Transmittance
RS = Solar Reflectance
AS = Solar Absorption
TV = Visual Transmittance

SHGC = Solar Heat Gain Coefficient

1/4 CL = 1/4" Clear Glass
1 HA = 1" Heat Absorbing Glass

Fabrics Installed Internally
Zero-Degree Profile Angle

For additional performance values, test references and technical definitions visit us at www.phifer.com.

P60 Bamboo/Birch

COMPOSITION: 28% polyester, 72% vinyl on polyester
MESH WEIGHT: 14.5 (oz/yd2)
FABRIC THICKNESS (IN): .038
OPENNESS FACTOR: Approx. 10%
UV BLOCKAGE: Approx. 90%
FIRE CLASSIFICATION: California US Title 19 (Small Scale), NFPA 701-2004 TM#1 (Small and Large Scale), BS 5867 2008 Part 2 Type B Performance, NFPA 101 (Class A Rating), ASTM E 84 (Class 1) and IBC Section 903.1 (Class A Rating)

Q43 Marble/Sand

COMPOSITION: 28% polyester, 72% vinyl on polyester
MESH WEIGHT: 14.5 (oz/yd2)
FABRIC THICKNESS (IN): .038
OPENNESS FACTOR: Approx. 5%
UV BLOCKAGE: Approx. 95%
FIRE CLASSIFICATION: California US Title 19 (Small Scale), NFPA 701-2004 TM#1 (Small and Large Scale), BS 5867 2008 Part 2 Type B Performance, NFPA 101 (Class A Rating), ASTM E 84 (Class 1) and IBC Section 903.1 (Class A Rating)

Q46 Bamboo/Wheat

COMPOSITION: 27.5% polyester, 67% vinyl on polyester, 5.5% acrylic
MESH WEIGHT: 14.3 (oz/yd2)
FABRIC THICKNESS (IN): .044
OPENNESS FACTOR: Approx. 7%
UV BLOCKAGE: Approx. 93%
FIRE CLASSIFICATION: California Technical Bulletin 117 Sect. E. Part 1, NFPA 101 (Class A Rating), NFPA 701-2004 TM#1 (Small Scale), ASTM E 84 (Class 1) and IBC Section 903.1 (Class A Rating)

Q47 Moire/Mocha

COMPOSITION: 26.3% polyester, 67.7% vinyl on polyester, 6% acrylic
MESH WEIGHT: 12.3 (oz/yd2)
FABRIC THICKNESS (IN): .035
OPENNESS FACTOR: Approx. 7%
UV BLOCKAGE: Approx. 93%
FIRE CLASSIFICATION: California Technical Bulletin 117 Sect. E. Part 1, NFPA 101 (Class A Rating), NFPA 701-2004 TM#1 (Small Scale), ASTM E 84 (Class 1) and IBC Section 903.1 (Class A Rating)

Q48 Bark/Cedar

COMPOSITION: 26.3% polyester, 67.7% vinyl on polyester, 6% acrylic
MESH WEIGHT: 12.3 (oz/yd2)
FABRIC THICKNESS (IN): .035
OPENNESS FACTOR: Approx. 10%
UV BLOCKAGE: Approx. 90%
FIRE CLASSIFICATION: California

Technical Bulletin 117 Sect. E. Part 1, NFPA 101 (Class A Rating), NFPA 701-2004 TM#1 (Small Scale), ASTM E 84 (Class 1) and IBC Section 903.1 (Class A Rating)

Q49 Rattan/Umber

COMPOSITION: 27.5% polyester, 67% vinyl on polyester, 5.5% acrylic
MESH WEIGHT: 14.3 (oz/yd2)
FABRIC THICKNESS (IN): .044
OPENNESS FACTOR: Approx. 7%
UV BLOCKAGE: Approx. 93%
FIRE CLASSIFICATION: California Technical Bulletin 117 Sect. E. Part 1, NFPA 101 (Class A Rating), NFPA 701-2004 TM#1 (Small Scale), ASTM E 84 (Class 1) and IBC Section 903.1 (Class A Rating)

Q50 Bark/Tiger Oak

Q51 Wicker/Mushroom

COMPOSITION: 27.5% polyester, 67% vinyl on polyester, 5.5% acrylic
MESH WEIGHT: 14.3 (oz/yd2)
FABRIC THICKNESS (IN): .044
OPENNESS FACTOR: Approx. 5%
UV BLOCKAGE: Approx. 95%
FIRE CLASSIFICATION: California Technical Bulletin 117 Sect. E. Part 1, NFPA 101 (Class A Rating), NFPA 701-2004 TM#1 (Small Scale), ASTM E 84 (Class 1) and IBC Section 903.1 (Class A Rating)

Q53 Honeycomb/Brown Sugar

COMPOSITION: 26.3% polyester, 67.7% vinyl on polyester, 6% acrylic
MESH WEIGHT: 13 (oz/yd2)
FABRIC THICKNESS (IN): .037
OPENNESS FACTOR: Approx. 10%
UV BLOCKAGE: Approx. 90%
FIRE CLASSIFICATION: California Technical Bulletin 117 Sect. E. Part 1, NFPA 101 (Class A Rating), NFPA 701-2004 TM#1 (Small Scale), ASTM E 84 (Class 1) and IBC Section 903.1 (Class A Rating)

Q94 Tweed/Oatmeal

COMPOSITION: 36% polyester, 64% vinyl on polyester
MESH WEIGHT: 13.7 (oz/yd2)
FABRIC THICKNESS (IN): .036
OPENNESS FACTOR: Approx. 5%
UV BLOCKAGE: Approx. 95%
FIRE CLASSIFICATION: California Technical Bulletin 117 Sect. E. Part 1, NFPA 101 (Class A Rating), ASTM E 84 (Class 1) and IBC Section 903.1 (Class A Rating)

Q95 Tweed/Buckeye

COMPOSITION: 37% polyester, 63% vinyl on polyester
MESH WEIGHT: 13.6 (oz/yd2)
FABRIC THICKNESS (IN): .038
OPENNESS FACTOR: Approx. 5%
UV BLOCKAGE: Approx. 95%
FIRE CLASSIFICATION: California Technical Bulletin 117 Sect. E. Part 1, NFPA 101 (Class A Rating), ASTM E 84 (Class 1) and IBC Section 903.1 (Class A Rating)

Q96 Thatch/Wheatgrass

COMPOSITION: 27% polyester, 68% vinyl on polyester, 5% olefin
MESH WEIGHT: 13.5 (oz/yd2)
FABRIC THICKNESS (IN): .037
OPENNESS FACTOR: Approx. 7%
UV BLOCKAGE: Approx. 93%
FIRE CLASSIFICATION: California Technical Bulletin 117 Sect. E. Part 1, NFPA 101 (Class A Rating), ASTM E 84 (Class 1) and IBC Section 903.1 (Class A Rating)

R11 Linen/Cranberry

R12 Linen/Cinnamon

COMPOSITION: 45% polyester, 55% vinyl on polyester
MESH WEIGHT: 14.1 (oz/yd2)
FABRIC THICKNESS (IN): .040
OPENNESS FACTOR: Approx. 3%
UV BLOCKAGE: Approx. 97%
FIRE CLASSIFICATION: California Technical Bulletin 117 Sect. E. Part 1, NFPA 101 (Class A Rating), ASTM E 84 (Class 1) and IBC Section 903.1 (Class A Rating)

R85 Jute/Parchment

COMPOSITION: 49% polyester, 51% vinyl on polyester
MESH WEIGHT: 17.22 (oz/yd2)
FABRIC THICKNESS (IN): .040 in.
OPENNESS FACTOR: approx. 1%
UV BLOCKAGE: approx. 99%
FIRE CLASSIFICATION: California Technical Bulletin 117 Sect. E. Part 1, NFPA 101 (Class A Rating), ASTM E 84 (Class 1) and IBC Section 903.1 (Class A Rating)

R86 Jute/Flax

COMPOSITION: 49% polyester, 51% vinyl on polyester
MESH WEIGHT: 16.70 (oz/yd2)
FABRIC THICKNESS (IN): .039
OPENNESS FACTOR: approx. 1%
UV BLOCKAGE: approx. 99%
FIRE CLASSIFICATION: California Technical Bulletin 117 Sect. E. Part 1, NFPA 101 (Class A Rating), ASTM E 84 (Class 1) and IBC Section 903.1 (Class A Rating)

R87 Jute/Latte

COMPOSITION: 49% polyester, 51% vinyl on polyester
MESH WEIGHT: 16.62 (oz/yd2)
FABRIC THICKNESS (IN): .039
OPENNESS FACTOR: approx. 1%
UV BLOCKAGE: approx. 99%
FIRE CLASSIFICATION: California Technical Bulletin 117 Sect. E. Part 1, NFPA 101 (Class A Rating), ASTM E 84 (Class 1) and IBC Section 903.1 (Class A Rating)

R88 Jute/Coffee

COMPOSITION: 49% polyester, 51% vinyl on polyester
MESH WEIGHT: 16.88 (oz/yd2)
FABRIC THICKNESS (IN): .039
OPENNESS FACTOR: approx. 1%
UV BLOCKAGE: approx. 99%
FIRE CLASSIFICATION: California Technical Bulletin 117 Sect. E. Part 1, NFPA 101 (Class A Rating), ASTM E 84 (Class 1) and IBC Section 903.1 (Class A Rating)

R89 Chenille/Marshmallow

COMPOSITION: 49% polyester, 51% vinyl on polyester
MESH WEIGHT: 16.43 (oz/yd2)
FABRIC THICKNESS (IN): .048
OPENNESS FACTOR: approx. 3%
UV BLOCKAGE: approx. 97%
FIRE CLASSIFICATION: California Technical Bulletin 117 Sect. E. Part 1, NFPA 101 (Class A Rating), ASTM E 84 (Class 1) and IBC Section 903.1 (Class A Rating)

R90 Chenille/Pearl

COMPOSITION: 49% polyester, 51% vinyl on polyester
MESH WEIGHT: 15.60 (oz/yd2)
FABRIC THICKNESS (IN): .044
OPENNESS FACTOR: approx. 3%
UV BLOCKAGE: approx. 97%
FIRE CLASSIFICATION: California Technical Bulletin 117 Sect. E. Part 1, NFPA 101 (Class A Rating), ASTM E 84 (Class 1) and IBC Section 903.1 (Class A Rating)

R91 Chenille/Honey

COMPOSITION: 49% polyester, 51% vinyl on polyester
MESH WEIGHT: 16.34 (oz/yd2)
FABRIC THICKNESS (IN): .045
OPENNESS FACTOR: approx. 3%
UV BLOCKAGE: approx. 97%
FIRE CLASSIFICATION: California Technical Bulletin 117 Sect. E. Part 1, NFPA 101 (Class A Rating), ASTM E 84 (Class 1) and IBC Section 903.1 (Class A Rating)

R92 Chenille/Driftwood

COMPOSITION: 49% polyester, 51% vinyl on polyester
MESH WEIGHT: 15.00 (oz/yd2)
FABRIC THICKNESS (IN): .047
OPENNESS FACTOR: approx. 5%
UV BLOCKAGE: approx. 95%
FIRE CLASSIFICATION: California Technical Bulletin 117 Sect. E. Part 1, NFPA 101 (Class A Rating), ASTM E 84 (Class 1) and IBC Section 903.1 (Class A Rating)

R93 Wicker/Straw

COMPOSITION: 49% polyester, 51% vinyl on polyester
MESH WEIGHT: 15.68 (oz/yd2)
FABRIC THICKNESS (IN): .045
OPENNESS FACTOR: approx. 3%
UV BLOCKAGE: approx. 97%
FIRE CLASSIFICATION: California Technical Bulletin 117 Sect. E. Part 1, NFPA 101 (Class A Rating), ASTM E 84 (Class 1) and IBC Section 903.1 (Class A Rating)

R94 Wicker/Truffle

COMPOSITION: 26% polyester, 67% vinyl on polyester, 7% Olefin
MESH WEIGHT: 13.22 (oz/yd2)
FABRIC THICKNESS (IN): .037
OPENNESS FACTOR: approx. 5%
UV BLOCKAGE: approx. 95%
FIRE CLASSIFICATION: California Technical Bulletin 117 Sect. E. Part 1, NFPA 101 (Class A Rating), ASTM E 84 (Class 1) and IBC Section 903.1 (Class A Rating)

R95 Bark/Sienna

COMPOSITION: 43% polyester, 57% vinyl on polyester
MESH WEIGHT: 16.26 (oz/yd2)
FABRIC THICKNESS (IN): .054
OPENNESS FACTOR: approx. 3%
UV BLOCKAGE: approx. 97%
FIRE CLASSIFICATION: California Technical Bulletin 117 Sect. E. Part 1, NFPA 101 (Class A Rating), ASTM E 84 (Class 1) and IBC Section 903.1 (Class A Rating)

U10 Linen/Topaz

V88 Linen/Fig
COMPOSITION: 45% polyester, 55% vinyl on polyester
MESH WEIGHT: 14.1 (oz/yd2)
FABRIC THICKNESS (IN): .040
OPENNESS FACTOR: Approx. 3%
UV BLOCKAGE: Approx. 97%
FIRE CLASSIFICATION: California Technical Bulletin 117 Sect. E. Part 1, NFPA 101 (Class A Rating), ASTM E 84 (Class 1) and IBC Section 903.1 (Class A Rating)

U11 Linen/Burlap

COMPOSITION: 43% polyester, 57% vinyl on polyester
MESH WEIGHT: 16.1 (oz/yd2)
FABRIC THICKNESS (IN): .046
OPENNESS FACTOR: Approx. 3%
UV BLOCKAGE: Approx. 97%
FIRE CLASSIFICATION: California Technical Bulletin 117 Sect. E. Part 1, NFPA 101 (Class A Rating), ASTM E 84 (Class 1) and IBC Section 903.1 (Class A Rating)

U12 Linen/Cream

COMPOSITION: 43% polyester, 57% vinyl on polyester
MESH WEIGHT: 16.1 (oz/yd2)
FABRIC THICKNESS (IN): .052
OPENNESS FACTOR: Approx. 3%
UV BLOCKAGE: Approx. 97%
FIRE CLASSIFICATION: California Technical Bulletin 117 Sect. E. Part 1, NFPA 101 (Class A Rating), ASTM E 84 (Class 1) and IBC Section 903.1 (Class A Rating)

U14 Crepe/Walnut

U15 Crepe/Granola

U16 Crepe/Toasted Coconut

V90 Crepe/Chestnut

COMPOSITION: 28% polyester, 72% vinyl on polyester
MESH WEIGHT: 14.3 (oz/yd2)
FABRIC THICKNESS (IN): .039
OPENNESS FACTOR: Approx. 10%
UV BLOCKAGE: Approx. 90%
FIRE CLASSIFICATION: California Technical Bulletin 117 Sect. E. Part 1, NFPA 101 (Class A Rating), ASTM E 84 (Class 1) and IBC Section 903.1 (Class A Rating)

U24 Seaglass/Silver

U25 Seaglass/Copper

U28 Seaglass/Chardonnay

U29 Seaglass/Crystal

COMPOSITION: 28% polyester, 72% vinyl on polyester
MESH WEIGHT: 14.3 (oz/yd2)
FABRIC THICKNESS (IN): .039
OPENNESS FACTOR: Approx. 10%
UV BLOCKAGE: Approx. 90%
FIRE CLASSIFICATION: California Technical Bulletin 117 Sect. E. Part 1, NFPA 101 (Class A Rating), ASTM E 84 (Class 1) and IBC Section 903.1 (Class A Rating)

STYLE 5000 SPECIFICATIONS

SheerWeave Style 5000 features fabrics that combine textured yarns with traditional patterns. With a color palette of hushed naturals and rich earth tones, this collection offers a range of classic options designed to suit any style of decor or personal preference. Style 5000 can also be used in exterior roller shades.

FIRE CLASSIFICATION	See individual pattern certifications	
BACTERIA AND FUNGAL RESISTANCE	ASTM E 2180 includes Microban antimicrobial additives	ASTM G21
ENVIRONMENTAL CERTIFICATION	GREENGUARD Certified to these standards for low chemical emissions into indoor air during product usage	GREENGUARD Gold
LEAD FREE	RoHS/Directive 2002/95/EC ANSI/WCMA A 100.1-2007 for lead content US Consumer Product Safety Commission Section 101	REACH (EC 1907/2006) compliant
WARRANTY	10-year interior	5-year exterior
ACOUSTICAL PERFORMANCE	NRC (Noise Reduction Coefficient) and SAA (Sound Absorption Average) tested in accordance with ASTM C423-09a	
UV PROTECTION	Seal of Approval by the Melanoma International Foundation (MIF) for effectiveness in preventing sun damage to the skin or eyes	

STYLE 5000

WIDTHS	74" and 98" 187.96 cm and 248.9 cm
ROLL LENGTH	30 Linear Yards 27.4 m
ACOUSTICAL VALUE	NRC .15 / SAA .16

For additional specification information, please see individual pattern listings.

PHIFER
INCORPORATED

P. O. Box 1700 • Tuscaloosa, Alabama 35403-1700 USA
Phone: 205.345.2120 • FAX: 205.391.0799
Toll Free USA/Canada: 1.800.221.5497
www.phifer.com • ISO Registered



® SheerWeave is a registered trademark of PHIFER INCORPORATED.
® MICROBAN is a registered trademark of Microban Products Company.
™ UL, the UL logos and the UL mark are trademarks of UL LLC.
Cover photo courtesy of WINDOW INTERIORS, Altamonte Springs, Florida, USA.
© PHIFER INCORPORATED V15B 3033841